



Your Automatic
Pool Cover Authority™



AUTOMATIC POOL COVER

INSTALLATION, REPLACEMENT, AND SERVICE

TABLE OF CONTENTS

- COVER CARE SERVICE1**
- PREMIUM VINYL POOL KIT 9**
- PRODUCT BENEFITS2**
- COVER OPTIONS3**
- POOL TYPES 4**
- COVER TRACKS & LIDS5**
- SYSTEM COMPONENTS6-8**
- SAFETY FENCE FEATURES.....11**
- FREQUENTLY ASKED QUESTIONS.....12**

EXPERT TECHNICIANS

When you partner with Cover Care, you are partnering with a national pool cover installation company, not a subcontracted technician. Your local technicians live and work in your area.

Our techs provide industry leading expertise and experience. Collectively, our technicians can ensure we provide solutions even in the most unique circumstances.

- Hundreds of years of combined experience
- Knowledgeable, professional, courteous
- Specifically trained on all auto cover systems
- 98% first-call job completion rate
- Local presence, national support



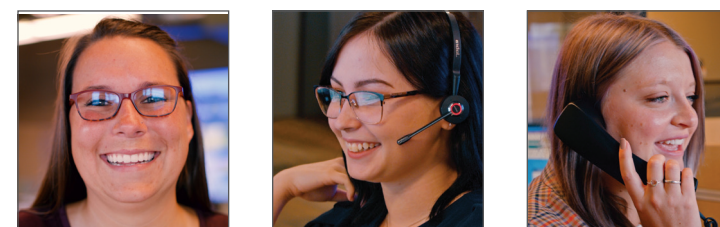
ON-HAND INVENTORY, ON-TIME INSTALLATIONS

Because we maintain new-system inventory in your area, and employ a nationwide network of Cover Care technicians, we are able to respond to your request faster than other pool cover companies.



PROACTIVE BUILDER SUPPORT

We have a dedicated builder-support team available to assist in all aspects of your projects. An expert builder support representative is available to assist you, even when your preferred rep is unavailable. Cover Care values your time and is dedicated to responding quickly.



INDUSTRY-LEADING PRODUCT

We understand that sourcing high quality components is a huge part of providing a high-quality finished product. That's why Cover Care sources product from Automatic Pool Covers, Inc., the industry leader in automatic pool covers. We ensure your customers get the most durable, reliable cover system on the market.



HOMEOWNER PROTECTION

- Restrict and control access to prevent unsupervised access to pool
- Highest level of security gives peace of mind
- Withstands thousands of pounds of surface weight
- PowerTouch™ Controller secures pool in 45 seconds on average
- Meets safety standards: UL/ASTM-1346 and building codes, UL compliant



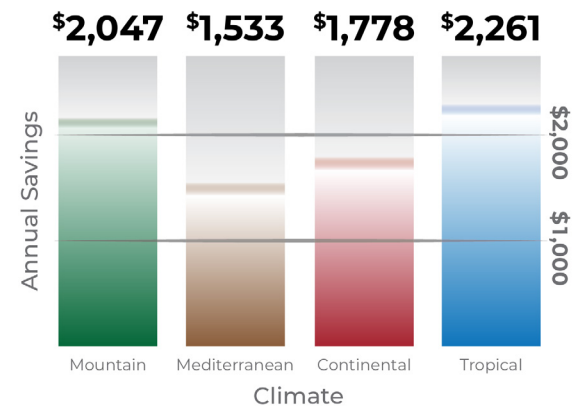
* Walking or standing on pool cover is not recommended.

COST SAVINGS*

AUTOMATIC POOL COVER SAVINGS POTENTIAL

- Up to 70% on heating costs
- Lowers evaporation up to 90%
- Reduce operating costs \$1,500 - \$2,300 per year*
- Chemicals can last 35% - 60% longer
- Extends the life of pool equipment
- Safety cover, a solar cover, and a winter cover all-in-one

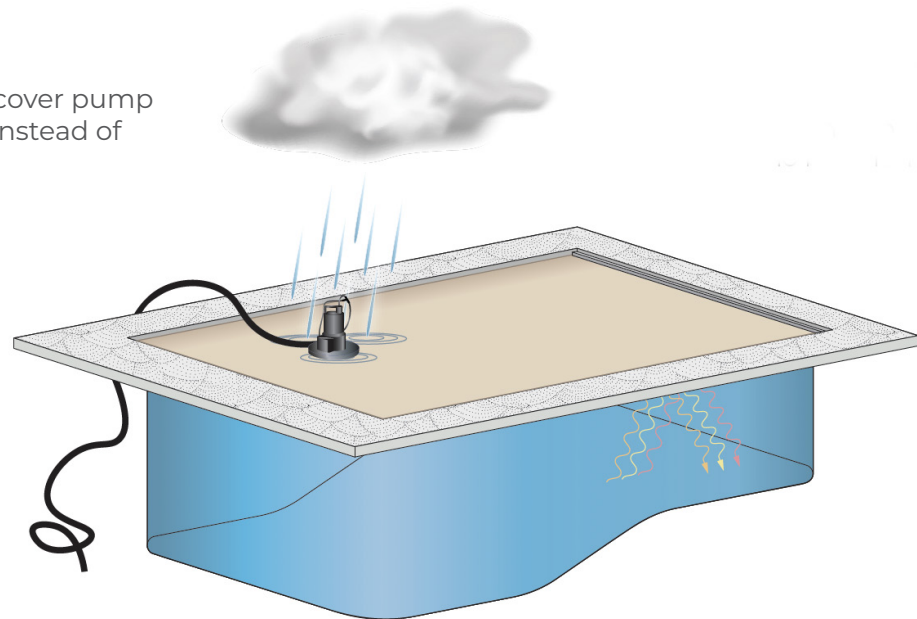
Average Annual Savings with a Safety Cover



*Dept of Energy findings
www.energy.gov

CONSERVES POOL WATER & SAVES TIME

- Protects pool from rain, contaminants, and other particulates
- Rain water is removed by the provided cover pump
- Leaves and other debris fall onto cover instead of into the water
- Extends the swim season
- Reduces cleaning time
- Provides more time to enjoy family!



SYSTEMS FOR ALL TYPES OF CONSTRUCTION



VINYL LINER



GUNITE/SHOTCRETE



FIBERGLASS

ACCOMMODATES DESIGN FEATURES



DIVING BOARDS



SLIDES



WATER FEATURES

VINYL OPTIONS

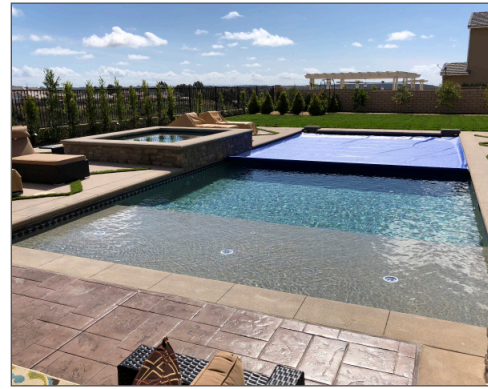
- Vinyl colors to compliment or blend into the poolscape
- Vinyl sample swatches are available.



Colors shown are representative of the vinyl colors. Actual vinyl colors may vary due to lighting, vinyl dye lots, printing, etc.

We work with you to install an automatic cover on many pool types, shapes, and configurations.

Cover Care offers a variety of tracks and lids to accommodate pool aesthetics and budget options.



RECTANGLE



RAISED WALL



VANISHING EDGE



RETAINER TRACK

Retainer built into pool wall during construction for maximum strength



VANISHING EDGE TRACK

Accommodates vanishing edge wall whether sloped in or out



UNDER TRACK

Installed on the under side of poured concrete deck



PERIMETER OVERFLOW



EXTREME CANTILEVER



T-SHAPED OR L-SHAPED



TOP TRACK

Installed directly on top of deck



FLUSH ALUMINUM LID

Walk-on gray painted aluminum lid sits flush with deck



ALUMINUM LID

Rests on top of the deck, not designed to be walked on



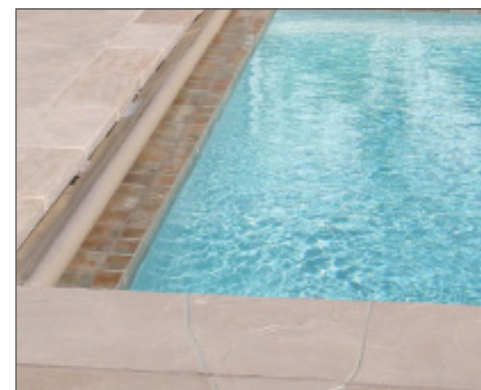
DECK ON DECK



FREE FORMED

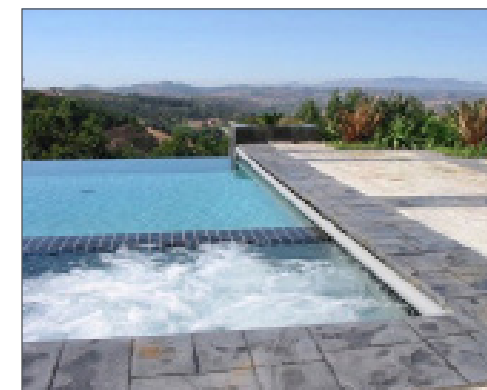


EXISTING POOL



14" WALK-ON COPING LID

Lid covers vault area, lead edge bar does not retract completely



18" WALK-ON COPING LID

Lead edge bar retracts to the lid



24" WALK-ON COPING LID

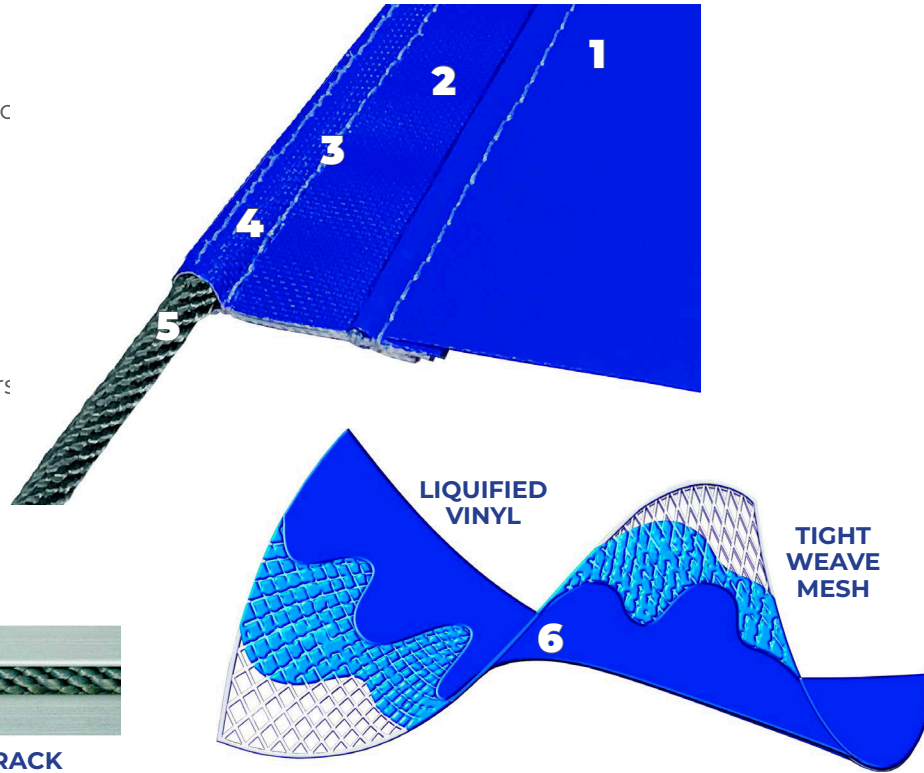
Lead edge retracts beneath lid, requiring a 5" waterline

SYSTEM COMPONENTS



COVER CONSTRUCTION

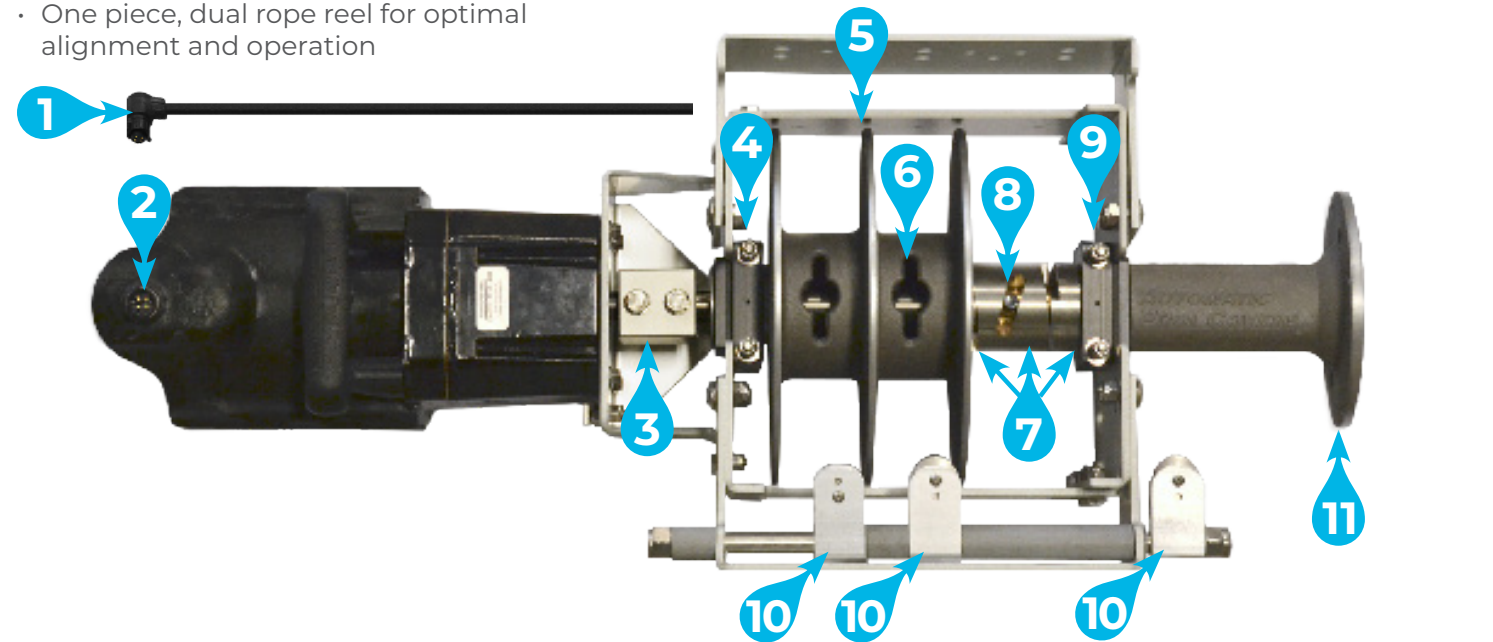
1. Durable Vinyl
 - Vinyl infused with UV and pool chemic
2. Hybrid Manufacturing Process
 - Best performance
3. Heat-Welded Webbing
 - Color matches vinyl for a clean look
4. Proprietary Manufacturing Process
5. Invis-A-Rope™
 - High performance and reliable
 - Virtually invisible in track to swimmers
6. Poured, or coated vinyl
 - Tighter mesh, significantly reduces shrinkage, improved performance



(5) INVIS-A-ROPE™ SHOWN IN ALUMINUM TRACK

MECHANISM

- Aluminum and stainless steel construction
- Direct-drive mechanism system
- One piece, dual rope reel for optimal alignment and operation



- | | | |
|--------------------------------------|---------------------------------|---|
| 1. Wire Harness with Quick Connector | 5. Rope Reels | 9. Tension Block for Roll-Up Tube |
| 2. Quick Connect Power Connector | 6. Fastener-less Rope Key Holes | 10. Pulleys for Ropes |
| 3. Quick Release Motor Coupler | 7. (3) Shifting Dogs | 11. End Casting to Attach to Roll-Up Tube |
| 4. Tension Block for Rope Reels | 8. Hardened Steel Drive Pin | |



SYSTEM COMPONENTS

APCP-1700-40 PUMP

- Exclusive 40-Ft. power cord
- Exclusive Caviar Black color
- Up to 1,745 gallons per hour
- CoverBlast® or garden hose connection
- Automatic On/Off
- 3 year warranty



Image shown with exclusive black CoverBlast®

MOTOR

- Includes Seal Technology™
- 100% submersible, water-resistant



TOUCHPAD CONTROLLER

- Patented SmartMotion™ technology
- Electronic torque limiting continuously protects the cover system during operation
- Personalized, customizable code restricts access to pool
- Back-lit keypad allows clear visibility night and day



SAND-INFUSED PAINT LEAD EDGE
(Only with THREE-SIXTY-FIVE.)



CLEAR ANODIZED LEAD EDGE



4" LEAD EDGE FOR EXTRA WIDE POOLS

ATLAS LID BRACKET EXTRA Heavy Duty

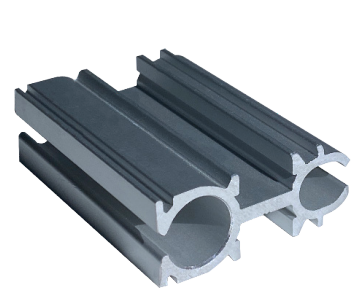


- 11" Standard Extension - 640 lbs/bracket
- 13"-16" Extension - 435 lbs/bracket
- 17"-20" Extension - 370 lbs/bracket
- 21"-24" Extension - 325 lbs/bracket

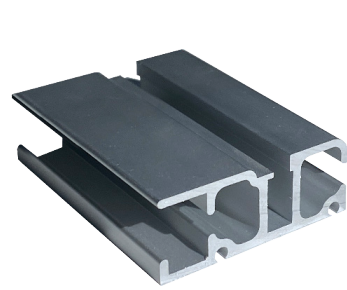
HD2 & HD3 LID BRACKETS Heavy Duty



- HD2 - 11" Standard Extension - 300 lbs/bracket
- HD3 - HD2 with 12"-16" Extension - 175 lbs/bracket



2 CHANNEL TRACK
Enlarged channel enables cover and slider to occupy the same space and facilitates glider durability



3 CHANNEL TRACK
Dedicated third channel provides a dedicated area for the glider, more durable



VINYL LINER COPING
Top metal bull-nose remains visible; Middle opening receives track; Bottom slot receives vinyl liner edge; Sand infused for easy grip/non-slip



VINYL LINER RETAINER
Receives track and bead receiver for vinyl liner edge



GUNIT RETAINER
Installed between the pool structure and pool deck; provides maximum strength



REUSABLE FORM SHIM*
Fills space where track will be inserted; secures form in place while pouring deck
**Shown with 3-in. Bullet Shim*



90° FORM
Vertical form with rounded bottom and straight top enables finisher to tool the edge



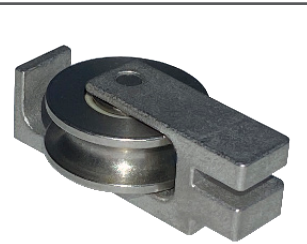
INCLINE FORM
Form angle extends toward the pool and then rounds back toward the pool deck



3 CHANNEL PULLEY



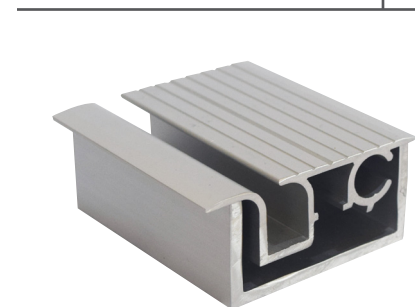
3 CHANNEL ROPE GUIDE



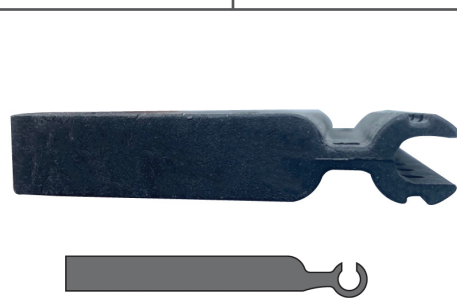
2 CHANNEL PULLEY



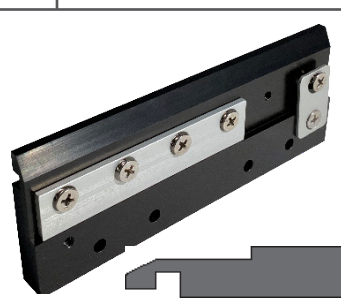
2 CHANNEL ROPE GUIDE



FLUSH TRACK

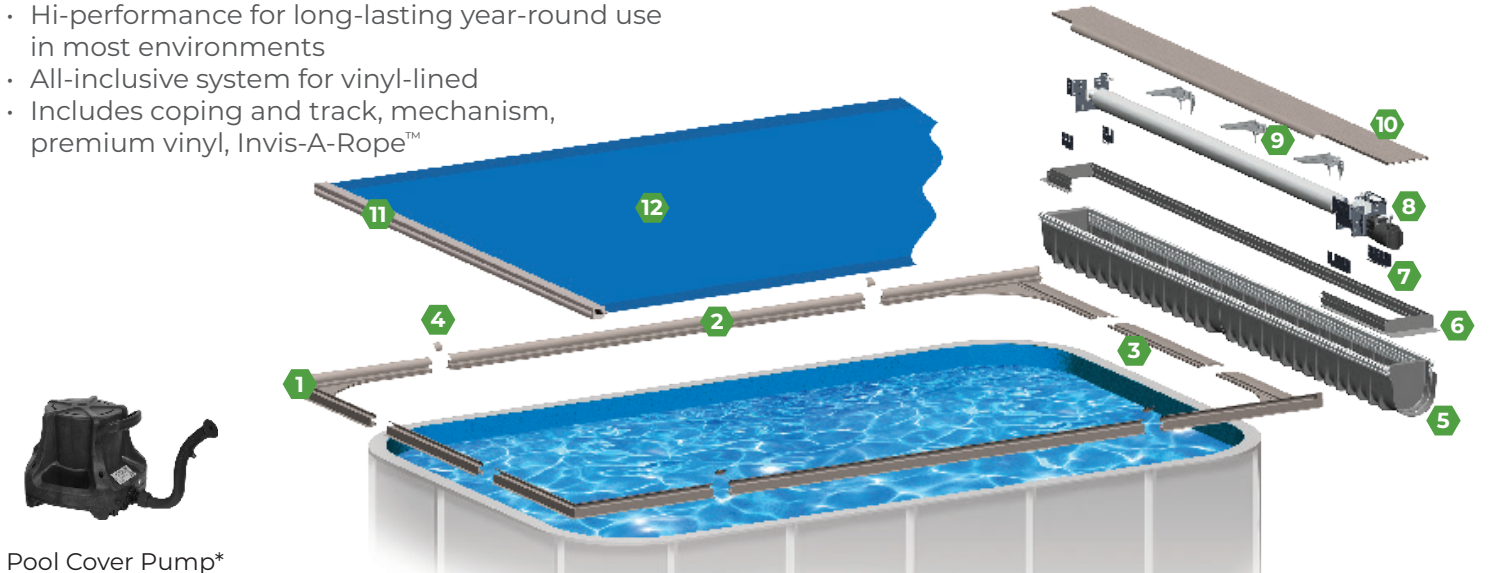


TWO CHANNEL
Under Track Glider Body



THREE CHANNEL
Under Track Glider Body

- Complete safety cover system, engineered with superior components
- Best and most reliable automatic cover
- Hi-performance for long-lasting year-round use in most environments
- All-inclusive system for vinyl-lined
- Includes coping and track, mechanism, premium vinyl, Invis-A-Rope™



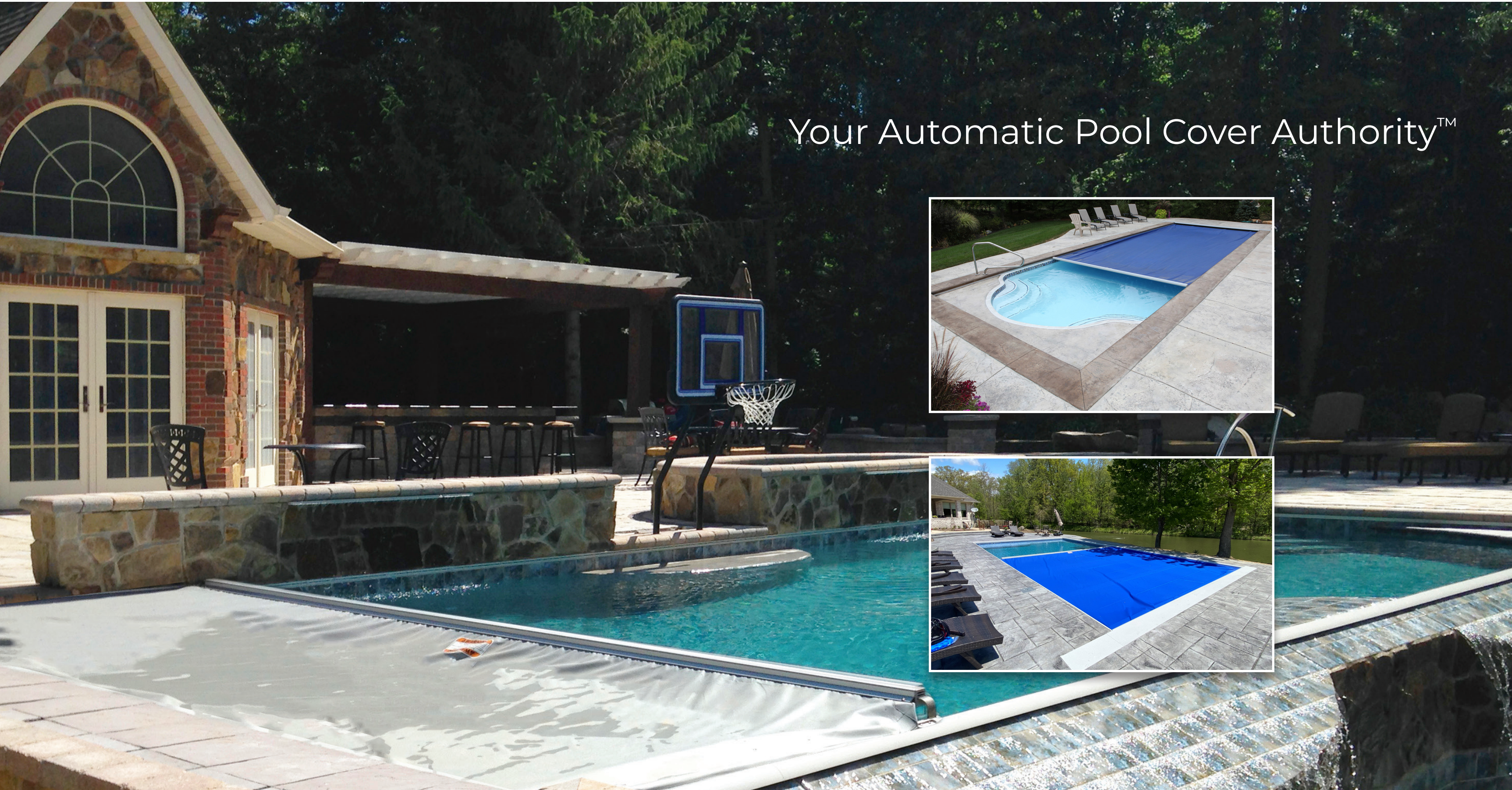
Pool Cover Pump*
**Included pool cover pump model may vary.*

DESIGNED AND ENGINEERED TO WORK TOGETHER AS A COMPLETE UNIT FOR ACCURATE INSTALLATION AND YEARS OF TROUBLE-FREE OPERATION

- | | | |
|-----------------------------------|----------------------------------|----------------------------------|
| 1. One Piece Corner Assemblies | 5. Polymer Box Assembly | 9. HD2 - Removable Lid Bracket |
| 2. Simple One-Piece Coping Design | 6. Quick-Clip Lid Riser | 10. Flush, Non-Skid, Walk-On Lid |
| 3. Integrated Wall Cap | 7. Drop & Lock Mounting Brackets | 11. Lead Edge Bar |
| 4. Clip-on Coping Splice | 8. AutoGuard™ Drive Mechanism | 12. Vinyl Fabric |

<p>1 Corner Options</p>	<p>2 One-Piece Encapsulated Coping (Options on pg. 8)</p>	<p>3 Wall Cap Supports Slide-On Polymer Box 5</p>	<p>7 Drop & Lock Brackets for Accurate Installation</p>
<p>9 Lid Brackets Support Non-Skid, Walk-On Lid</p>	<p>9 Lid Brackets Support Non-Skid, Walk-On Lid</p> <ul style="list-style-type: none"> • Provides safe deck surface • Conceals cover and mechanism • Aluminum lid integrates with deck • Finished with exclusive sand-infused paint for non-skid surface 		<p>10 Strong Lead Edge</p> <ul style="list-style-type: none"> • Securely connects the vinyl to the system • Seals out debris • Lead Edge bumper prevents damage to pool wall

Your Automatic Pool Cover Authority™



FREQUENTLY ASKED QUESTIONS



AUTOMATIC POOL COVER BENEFITS

IS AN AUTOMATIC COVER THE BEST WAY TO PROTECT THE POOL?

Yes. When closed, an automatic pool cover provides a barrier to the pool. Access to the pool is only available by opening the cover, which requires the pool owner's personalized access code (or key).

WHAT OTHER PROTECTION DOES THE AUTOMATIC POOL COVER PROVIDE?

A closed automatic pool cover will prevent pets, stray and wild animals, as well as other objects from entering the pool. Our covers are also known to have prevented off-road vehicles and even automobiles from entering the pool.

WILL THE POOL COVER ROLL-UP BE AN OBSTRUCTION?

No. On new construction, the cover rolls up under the pool cover lid.

WHAT OTHER BENEFITS DOES AN AUTOMATIC POOL COVER PROVIDE?

Safety is the most important benefit, but an automatic pool cover also provides savings in heating costs (contains heat when the cover is closed), and reduces evaporation, making chemicals more efficient and longer-lasting. An automatic pool cover prolongs the life of pool equipment such as pumps and filters, by keeping leaves and other debris out of the pool.

IS AN AUTOMATIC COVER THE ONLY NECESSARY BARRIER FOR MY POOL?

Some areas have determined that an automatic pool cover is the only required barrier, while other areas call for two forms of protection, like the addition of a fence. Check local statutes/codes.

OPERATION OF AN AUTO COVER

IS IT SAFE TO WALK ON A POOL COVER?

Although covers can support thousands of pounds in surface weight, it is only recommended to walk on the cover in emergency situations.

IS IT NECESSARY TO USE A POOL COVER PUMP?

Yes, the ASTM 1346 requires a UL-listed pump meeting water removal standards. Cover Care supplies pumps that meet the ASTM 1346 requirements.

HOW MUCH MAINTENANCE IS REQUIRED?

Our cover systems are engineered for durability and longevity. Operating the system as directed, and scheduling annual professional maintenance, ensures continuous and proper system operation.

CAN AN AUTOMATIC COVER BE INSTALLED ON ANY POOL?

An automatic cover can be installed on many in-ground pools. Coordination with pool builders before and during the construction process is essential to ensure the best outcome.

COVER CARE SERVICE

ARE COVER CARE TECHNICIANS TRAINED?

Cover Care technicians are continually trained on installation and service techniques for all manufacturer systems.

WHEN IS AN AUTOMATIC COVER INSTALLED?

An install is completed in conjunction with new-pool construction, or per request on an existing pool.

WHAT WARRANTY DOES COVER CARE PROVIDE?

Cover Care provides a one-year labor warranty. The system warranty is provided by Automatic Pool Covers, Inc. The limited warranty covers the mechanical components ten (10) years; the electrical components three (3) years, and the cover material five (5) years: 3-years full and 2-years prorated. Consult Cover Care for full details. Warranty may change without notice.

WHERE IS COVER CARE LOCATED?

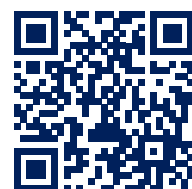
Cover Care has trained professionals who service areas nationwide. Because Cover Care adds additional service areas each year, visit CoverCare.com/Locations to find the location nearest you.

WHAT SYSTEM DOES COVER CARE USE?

Cover Care exclusively uses the AutoGuard™ system by Automatic Pool Covers, Inc. We also keep service parts for other systems on-hand enabling us to perform basic service.

DOES COVER CARE OPERATE UNDER OTHER BUSINESS NAMES?

Yes. Visit CoverCare.com/Locations for details.



LOCAL LEAD TECHNICIANS

MORE AUTOMATIC POOL COVER INSTALLATIONS COMPLETED THAN ANY OTHER COMPANY IN 2018, 2019, 2020, 2021, AND 2022.



100% of Cover Care technicians are CPR-certified.

Do not leave the pool cover partially open. Partially open covers are for display only. Cover Care, LLC does not have operations in CA. Brochure not to be distributed in CA.



COVER CARE[®] LLC

Your Automatic Pool Cover Authority[™]



READY TO PARTNER WITH US?
CALL 866-639-5045



COVER CARE[®] LLC



COVERCARE.COM
PP-5188 (1223)

FOLLOW US



Cover Care, LLC

Do not leave the pool cover partially open. Partially open covers are for display only. Cover Care, LLC does not have operations in CA. Brochure not to be distributed in CA.