

POOL SAFETY FENCES



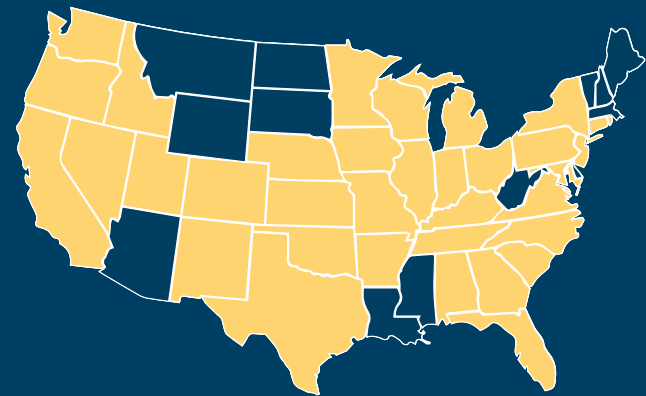
Pool Safety Fences

Patent numbers 9,650,832 B2 and 11,168,489 B2

Removable pool fences are an economical and innovative solution for pool safety, especially when an automatic pool cover is not a viable option.

Poolsafe offers safety mesh fences. Our fences meet or exceed many building codes, foster and day care requirements, and ASTM standards.

Ask about our installation options.



● States covered by authorized installers



Photos shown are for illustrative purposes only. Adult supervision is always best for children's safety

(888) 489-2282
Poolsafe.com



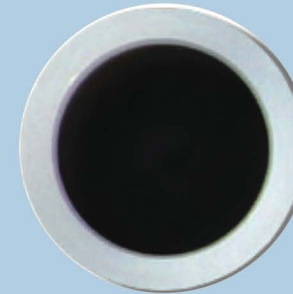
MM0002 REV1

Steelcore Poles

- Stainless steel reinforced aluminum poles provide maximum strength
- Poolsafe safety mesh fence poles are comprised of a synthetic insert with a solid, 1/2-inch stainless rod
- 4x more metal than standard pole insert
- Minimally invasive installation process
- No plastic fence sleeve exposed to UV



Standard Fence Pole Insert - *Hollow Aluminum*



Standard Deck Sleeve
Actual Size



Poolsafe® Fence Pole Insert - *1/2-Inch Solid SS Rod*



Poolsafe Deck Sleeve
Actual Size

Smallest holes drilled in deck without losing strength

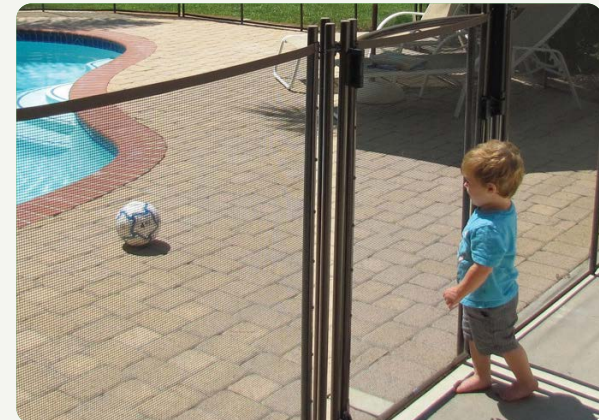
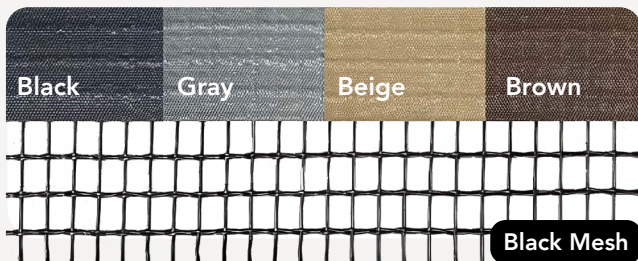
"I highly recommend Poolsafe to anyone considering a pool fence. The fence looks fantastic and is super easy to remove and put back in." - *Jacob Troyer, Pool Owner*

ClearGuard™ Mesh and Border

(Patent number 11,168,489 B2)

- Patented ClearGuard™ mesh and heat-welded borders provide maximum visibility and durability
- No stitching needed, eliminating potential of failed thread and peeling material
- Reinforced weaving technique provides maximum strength
- Vinyl border material is stretch, mildew, and stain resistant
- Available in black, gray, beige and brown in 4ft or 5ft heights

ClearGuard™ Mesh and Border



Triton™ Gate

- Patented self-latching Triton™ Gate features a curved top bar to help prevent children from climbing it
- Unique Tri-Pod Truss frame provides extra support to keep the gate stable and properly aligned